



Product Service

CERTIFICATE

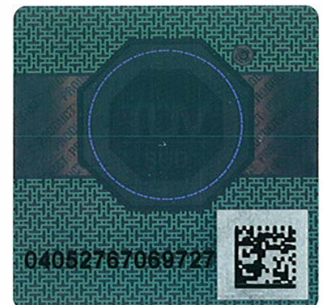
No. Z2 16 01 89811 003

Holder of Certificate: The Children's Playground Co. Ltd.329 Morell Avenue
Naas, Co. Kildare
IRELAND**Production Facility(ies):** 89812**Certification Mark:****Product:** Aerial Ropeway for Playgrounds**Model(s):** 4.081, 4.082, 4.083;**Parameters:** Model: length x width x constructional height; fall height4.081: 35.30 x 4.40 x 4.30 m; <1.00 m
4.082: 30.30 x 4.40 x 3.45 m; <1.00 m
4.083: 35.30 x 6.40 x 4.30 m; <1.00 m

User position: sitting

Tested according to: EN 1176-1:2008
EN 1176-4:2008

The product was tested on a voluntary basis and complies with the essential requirements. The certification mark shown above can be affixed on the product. It is not permitted to alter the certification mark in any way. In addition the certification holder must not transfer the certificate to third parties. See also notes overleaf.

Test report no.: 713067228-3**Valid until:** 2021-01-04**Date,** 2016-01-27
(Harald Bardowicks)

Page 1 of 1